

TECHNICAL MANUAL

**ORGANIZATIONAL, DIRECT SUPPORT, AND GENERAL SUPPORT MAINTENANCE
REPAIR PARTS AND SPECIAL TOOLS LISTS
(INCLUDING DEPOT MAINTENANCE REPAIR PARTS AND SPECIAL TOOLS)**

FOR

**TERMINAL SET, TELEPHONE AN/TCC-72
(NSN 5805-00-133-9003)**

HEADQUARTERS, DEPARTMENT OF THE ARMY

JUNE 1976

**Organizational, Direct Support, and General Support
 Maintenance Repair Parts and Special Tools Lists
 (Including Depot Maintenance Repair Parts and Special Tools)**

**For
 TERMINAL SET, TELEPHONE AN/TCC-72
 (NSN 5805-00-133-9003)
 Current as of 1 January 1976**

REPORTING OF ERRORS

You can improve this manual by recommending improvements using DA Form 2028-2 (Test) located in the back of the manual. Simply tear out the self addressed form, fill it out as shown on the sample, fold it where shown, and drop it in the mail.

If there are no blank DA Forms 2028-2 (Test) in the back of your manual, use the standard DA Form 2028 (Recommended changes to Publications and Blank Forms) and forward to the Commander, US Army Electronics Command, ATTN: DRSEL-MA-Q, Fort Monmouth, New Jersey 07703.

In either case a reply will be furnished direct to you.

		Page	Illus Figure
Section	I. Introduction.....	1	
	II. Repairs parts list.....	5	
Group	00 Telephone Terminal AN/TCC-72.....	5	1
	01 Shelter, Electrical Equipment S-412/TCC-72	7	2-12
	02 Converter, Telephone Signal CV-1548/G (See TM 11-5805-367-25P/5 for parts)		
	03 Intercommunication Station LS-147C/FI (See TM 11-5830-221-24P for parts)		
	04 Key Generator, Electronic TSEC/KG-27 (See TM 11-5810-232-12P and TM 11-5810- 232-34P for parts)		
	0401 Installation Kit, TSEC/KG-27	31	13
	0402 Loop-back kit, TSEC/KG-27	33	14
	05 Multiplexer TD-204/U (See TM 11-5805-367-25P/2) or Multiplexer TD-754 /G (See TM 11-5805-383-12 and TM 11-5805-383-35) for parts		
	06 Multiplexer TD-660/G or TD-660A/G (See TM 11-5805-382-12 and (TM 11-5805-382- 35P for parts)		
	07 Telephone Set TA-312/PT (See TM 11-5805-201-12 and TM 11-5805-201 35 for parts)		
Section	III. Special tools list (Not applicable)		
	IV. National stock number and part number index	34	

***This manual supersedes so much of TM 11-5805-479-14, 31 March 1971, as pertains to repair parts and special tools list.**

**SECTION I
INTRODUCTION**

1. Scope

This manual lists repair parts; special tools; and other support equipment required for performance of organizational, direct support, and general support maintenance for the AN/TCC-72.

2. General

This Repair Parts and Special Tools List is divided into the following sections:

a. *Section II. Repair Parts List.* A list of repair parts authorized for use in performance of maintenance. The list also includes parts which must be removed for replacement of the authorized parts. Parts lists are composed of functional groups in ascending numerical sequence, with the parts in each group listed in figure and item number sequence.

b. *Section III. Special Tools List.* Not applicable.

c. *Section IV. National Stock Number and Part Number Index.* A list, in ascending National item identification number (NIIN, last 9 digits) sequence, of all National stock numbers appearing in the listings, followed by a list, in alphameric sequence, of all part numbers appearing in the listings. National stock number and part numbers are cross-referenced to each illustration figure and item number appearance.

3. Explanation of Columns

The following provides an explanation of columns found in the tabular listings:

a. *Illustration.* This column is divided as follows:

(1) *Figure number.* Indicates the figure number of the illustration in which the item is shown.

(2) *Item number.* The number used to identify each item called out in the illustration.

b. *Source, Maintenance, and Recoverability Codes (SMR).*

(1) *Source code.* Source codes are assigned to support items to indicate the manner of acquiring support items for maintenance, repair, or overhaul of end items. Source codes are entered in the first and second positions of the Uniform SMR Code format as follows:

<i>Code</i>	<i>Definition</i>
PA	--Item procured and stocked for anticipated or known usage.
PD	--Support item, excluding support equipment, procured for initial issue or outfitting and stocked only for subsequent or additional initial issues or outfittings. Not subject to automatic replenishment.

NOTE

Cannibalization or salvage may be used as a source of supply for any items source coded above except those coded XA, XD, and aircraft support items as restricted by AR 700-42.

(2) *Maintenance code.* Maintenance codes are assigned to indicate the levels of maintenance authorized to USE and REPAIR support items. The maintenance codes are entered in the third and fourth positions of the Uniform SMR Code format as follows:

(a) The maintenance code entered in the third position will indicate the lowest maintenance level authorized to remove, replace and use the support item. The maintenance code entered in the third position will indicate one of the following levels of maintenance:

<i>Code</i>	<i>Application/Explanation</i>
O	--Support item is removed, replaced, used at the organizational level.
F	--Support item is removed, replaced, used at the direct support level.
D	--Support items that are removed, replaced, used at depot, mobile depot, specialized repair activity only.

(b) The maintenance code entered in the fourth position indicates whether the item is to be repaired and identifies the lowest maintenance level with the capability to perform complete repair (i.e., all authorized maintenance functions). This position will contain one of the following maintenance codes:

<i>Code</i>	<i>Application/Explanation</i>
D	--The lowest maintenance level capable of complete repair of the support item is the depot level.
Z	--Nonreparable. No repair is authorized.

(3) *Recoverability code.* Recoverability codes are assigned to support items to indicate the disposition action on unserviceable items. The recoverability code is entered in the fifth position of the Uniform SMR Code format as follows:

Recoverability

<i>Codes</i>	<i>Definition</i>
Z	--Nonreparable item. When unserviceable, condemn and dispose at the level indicated in position 3.
D	--Reparable item. When beyond lower level repair capability, return to depot. Condemnation and disposal not authorized below depot level.

c. *National Stock Number.* Indicates the National stock number assigned to the item and will be used for requisitioning purposes.

d. *Part Number.* Indicates the primary number used by the manufacturer (individual, company, firm, corporation, or Government activity), which controls the design and characteristics of the item by means of its engineering drawings, specifications standards, and inspection requirements, to identify an item or range of items.

NOTE

When a stock numbered item is requisitioned, the repair part received may have a different part number than the part being replaced.

e. *Federal Supply Code for Manufacturer (FSCM).* The FSCM is a 5-digit numeric code listed in SB 708-42 which is used to identify the manufacturer, distributor, or Government agency, etc.

f. *Description.* Indicates the Federal item name and, if required, a minimum description to identify the item.

g. *Unit of Measure (U/M).* Indicates the standard of the basic quantity of the listed item as used in performing the actual maintenance function. This measure is expressed by a two character alphabetical abbreviation (e.g., ea, in, pr, etc.). When the unit of measure differs from the unit of issue, the lowest unit of issue that will satisfy the required units of measure will be requisitioned.

h. *Quantity Incorporated in Unit.* Indicates the quantity of the item used in the breakout shown on the illustration figure, which is prepared for a functional group, subfunctional group, or an assembly.

4. Special Information

The following publications pertain to the AN/ TCC-72 and its components:

TM 11-5805-201-12, Telephone Set TA312/PT.

TM 11-5805-201-35, Telephone Set TA312/PT.

TM 11-5805-367-25P/2, Multiplexer TD-204/U.

TM 11-5805-367-25P/5, Converter, Telephone Signal CV-1548/G, CV-1548A/G and 18A4 Panel Assembly.

TM 11-5805-382-12, Multiplexers TD-660/G and TD-660A/G.

TM 11-5805-382-35P, Multiplexer TD-660A/G and Dual Inline Packing Configuration.

TM 11-5805-383-12, Multiplexer TD-754/G.

TM 11-5805-479-14, Terminal Set, Telephone AN/TCC-72.

TM 11-5810-232-12P, Communications Security Equipment TSEC/KG-27.

TM 11-5810-232-34P, Communications Security Equipment TSEC/KG-27.

TM 11-5830-221-24P, Intercommunications Station LS-147C/FI.

5. How to Locate Repair Parts

a. When National stock number or part number is unknown:

(1) *First.* Using the table of contents, determine the functional group within which the repair part belongs. This is necessary since illustrations are prepared for functional groups, and listings are divided into the same groups.

(2) *Second.* Find the illustration covering the functional group to which the repair part belongs.

(3) *Third.* Identify the repair part on the illustration and note the illustration figure and item number of the repair part.

(4) *Fourth.* Using the Repair Parts Listing, find the figure and item number noted on the illustration.

b. When National stock number or part number is known:

(1) *First.* Using the Index of National Stock Numbers and Part Numbers, find the pertinent National stock number or part number. This index is in ascending NIIN sequence followed by a list of part numbers in ascending alphanumeric sequence, cross-referenced to the illustration figure number and item number.

(2) *Second.* After finding the figure and item number, locate the figure and item number in the repair parts list.

6. Abbreviations

Not applicable.

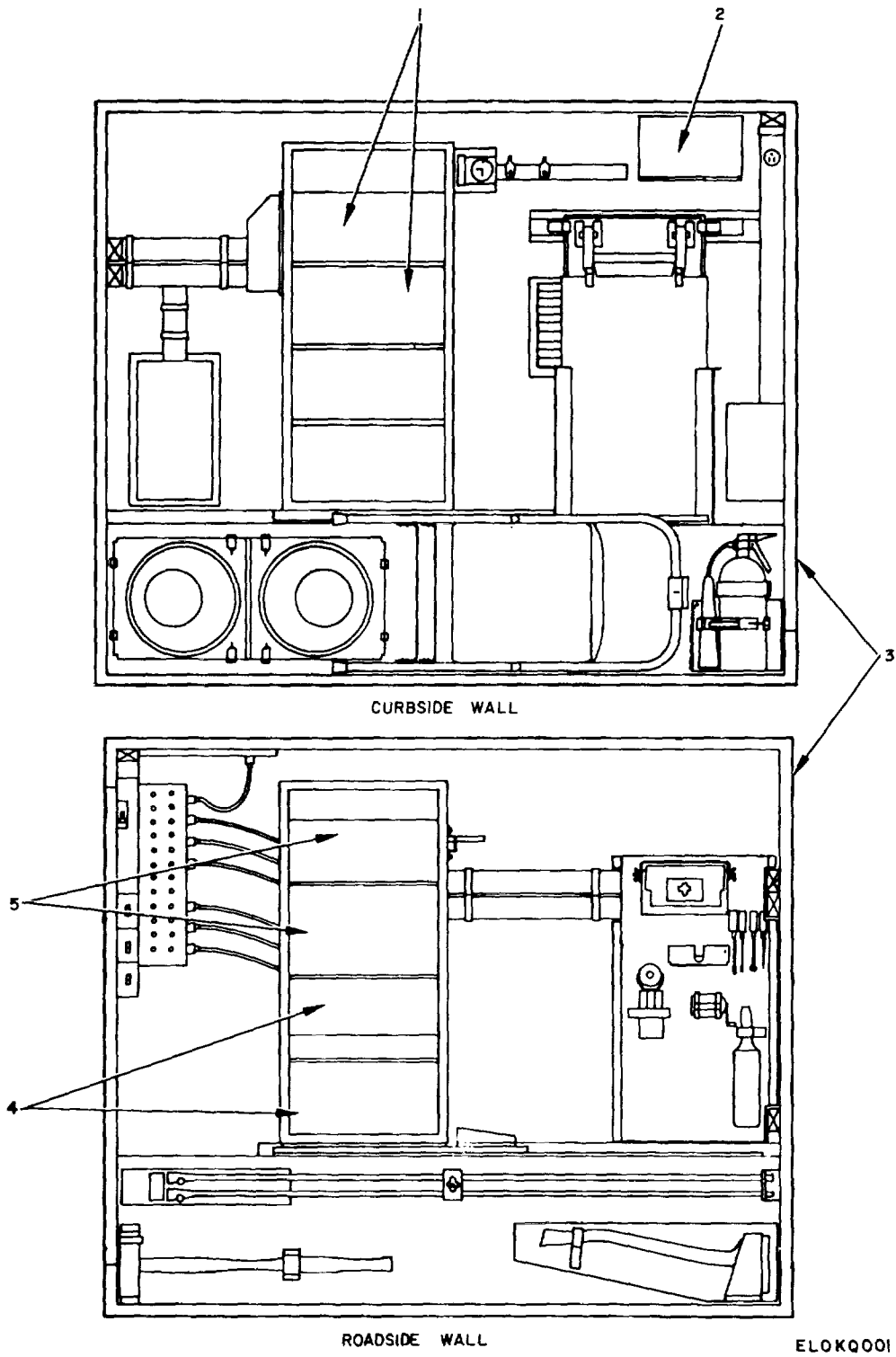
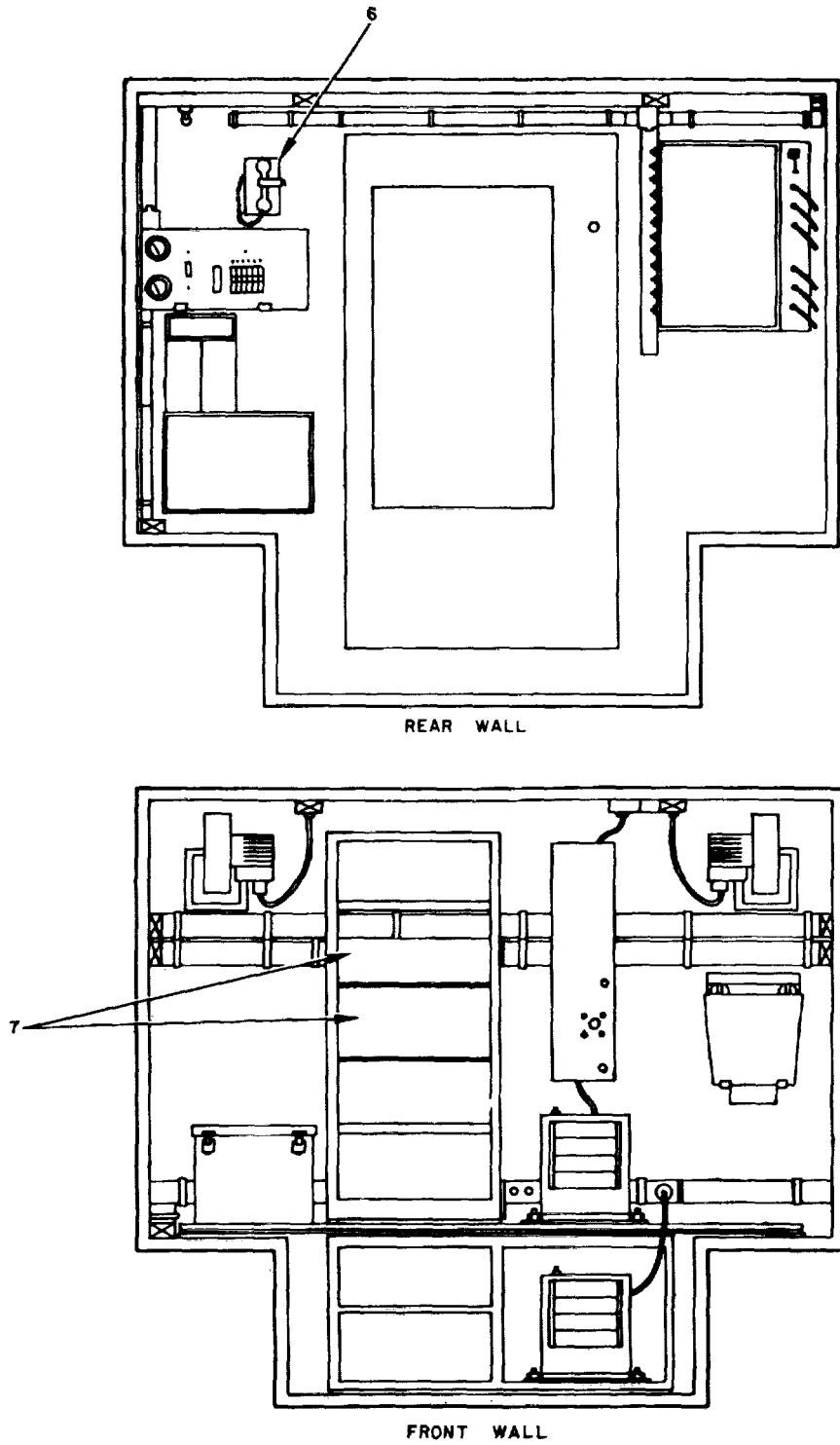


Figure 1. Telephone Terminal AN/TCC-72 (Sheet 1 of 2).

ELOKQ001



ELOK002

Figure 1. Telephone Terminal AN/TCC-72 (Sheet 2 of 2).

SECTION II

(1)		(2)	(3)	(4)	(5)	(6)	(7)	(8)
ILLUSTRATION		SMR CODE	NATIONAL STOCK NUMBER	PART NUMBER	FSCM	DESCRIPTION <i>USABLE ON CODE</i>	U/M	QTY INC IN UNIT
(a) FIG NO.	(b) ITEM NO.							
						GROUP 00 TELEPHONE TERMINAL AN/TCC-72		
1	1	PDODD	5805-00-900-8200	TD204U	80058	MULTIPLEXER SELECT	EA	2
1	1	PDODD	5870-00-930-8078	TD754G	80058	MULTIPLEXER	EA	Z
1	2	PDODD	5830-00-752-5357	LS147CFI	80058	INTERCOMMUNICATION STATION	EA	1
1	3	PDODD	5410-00-809-6697	S412TCC72	80058	SHELTER, ELECTRICAL EQUIPMENT	EA	1
1	4	PDODD	5805-00-069-8795	CV1548G	80058	CONVERTER, TELEPHONE SIGNAL	EA	7
1	5	PDODD	5820-00-930-8079	TD660G	80058	MULTIPLEXER	EA	2
1	5	PDODD	5820-00-928-3382	TD660AG	80058	MULTIPLEXER SELECT	EA	2
1	6	PDODD	5805-00-543-0012	TA312PT	80058	TELEPHONE SET	EA	1
1	7	PDODD	5810-00-054-9110	TSECKC27	80058	KEY GENERATOR, ELECTRONIC	EA	2

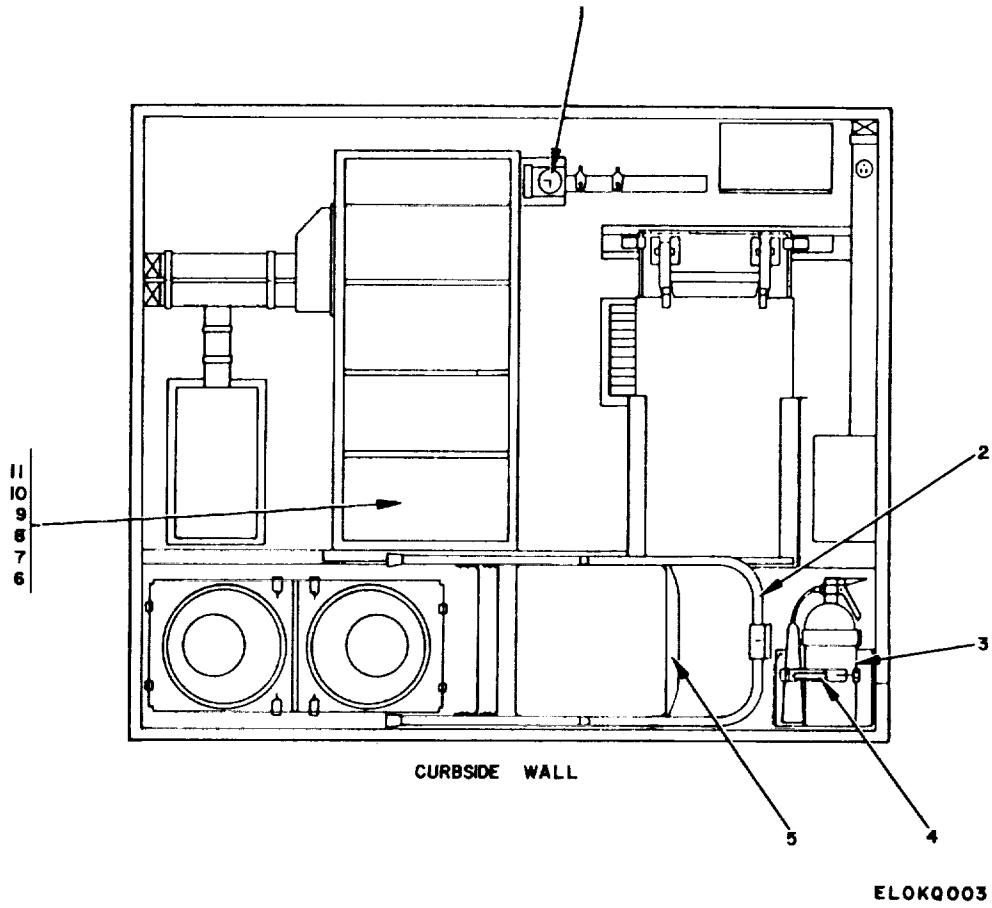
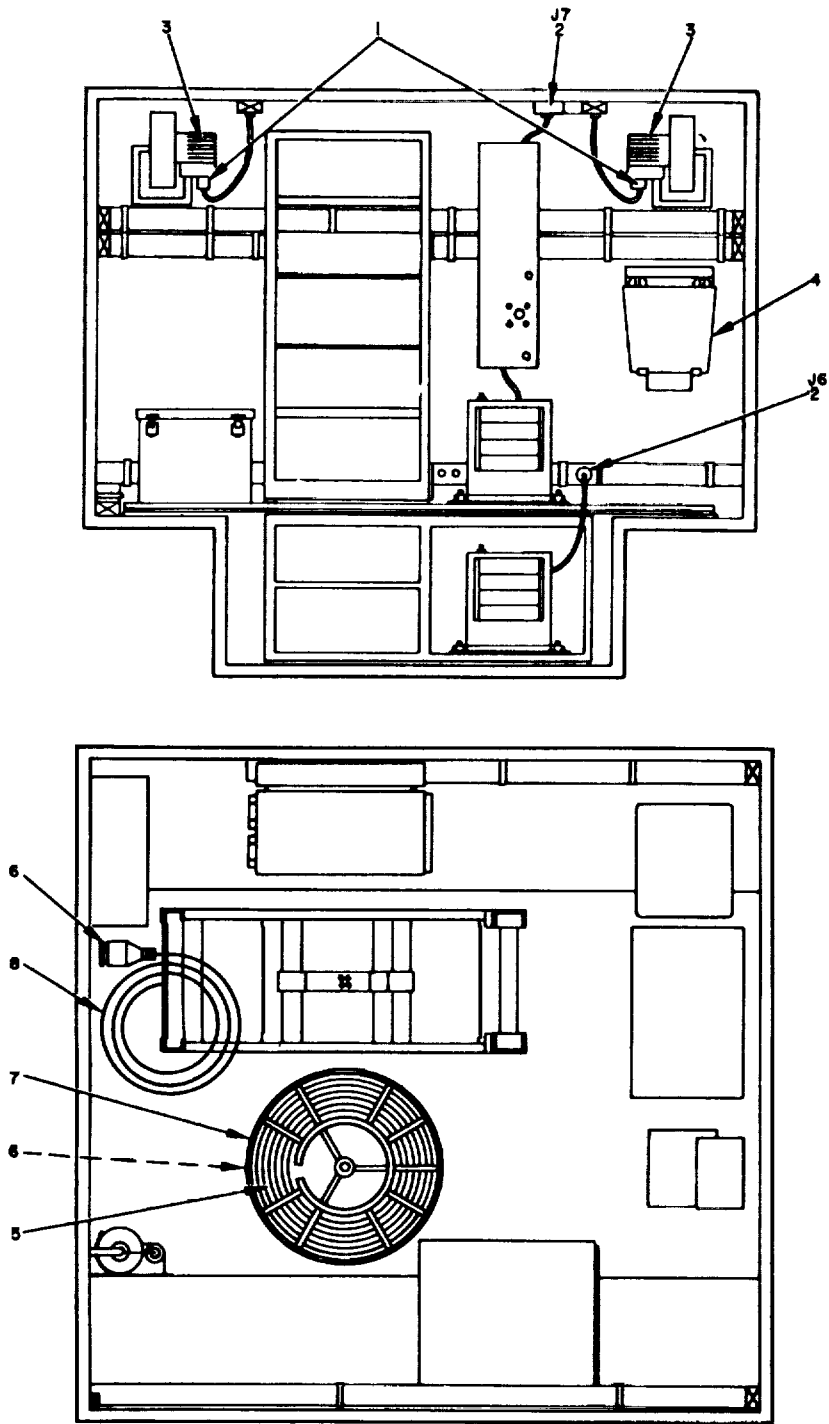


Figure 2. Shelter, Electrical Equipment S-412/TCC-72.

SECTION II

(1) ILLUSTRATION		(2)	(3)	(4)	(5)	(6)	(7)	(8)
(a) FIG NO.	(b) ITEM NO.	SMR CODE	NATIONAL STOCK NUMBER	PART NUMBER	FSCM	DESCRIPTION <i>USABLE ON CODE</i>	U/M	QTY INC IN UNIT
						GROUP 01 SHELTER, ELECTRICAL EQUIPMENT S-4		
						12/TCC-72		
2	1	PAOZZ	6645-00-410-2395	SCC539475	80063	CLOCK, ELECTRIC, WALL MOUNTED.....	EA	1
2	2	PAOZZ	7105-00-269-8463	SCD535471	80063	CHAIR, FOLDING.....	EA	1
2	3	PAOZZ	4210-00-270-4512	SCD539482	80063	EXTINGUISHER, FIRE.....	EA	1
2	4	PAOZZ	4210-00-288-6849	RB1	33525	BRACKET, FIRE EXTINGUISHER.....	EA	1
2	5	PAOZZ	7210-00-753-3043	SCC539526	80063	CUSHION, CHAIR.....	EA	1
2	6	PAFZZ	5935-00-233-3225	MS3116J14-19S	96906	CONNECTOR, PLUG, ELECTRICAL.....	EA	24
2	7	PAOZZ	5340-00-592-7996	N7	06229	STRAP, RETAINING.....	EA	6
2	8	PAFZZ	5340-00-857-1424	N1	06229	STRAP, RETAINING.....	EA	23
2	9	PAFZZ	5935-00-813-4720	MS3114E14-19F	96906	CONNECTOR, PLUG, ELECTRICAL.....	EA	6
2	10	PAFZZ	5935-00-817-3385	PT06E12-8SSR	77820	CONNECTOR, PLUG. ELECTRICAL.....	EA	4
2	11	PAOZZ	5975-00-705-5841	N3	06229	STRAP, RETAINING.....	EA	7



ELOK0004

Figure 3. Shelter, Electrical Equipment S-412/TCC-72, Front Wall and Floor Plan.

SECTION II

(1) ILLUSTRATION		(2)	(3)	(4)	(5)	(6)	(7)	(8)
(a) FIG NO.	(b) ITEM NO.	SMR CODE	NATIONAL STOCK NUMBER	PART NUMBER	FSCM	DESCRIPTION <i>USABLE ON CODE</i>	U/M	QTY INC IN UNIT
3	1	PAOZZ	5910-00-142-4515	S32943	56289	CAPACITOR, FIXED, ELECTROLYTIC	EA	2
3	2	PAFZZ	5935-00-350-1834	5261	74545	CONNECTOR, RECEPTACLE ELECTRICAL	EA	2
3	3	PAFZZ	6105-00-234-3504	SCD5339825	80063	MOTOR, ALTERNATING CURRENT.....	EA	2
3	4	PAOZZ	7520-00-159-4863	SCD539454	80063	BASKET WASTEPAPER.....	EA	1
3	5	PAFZZ	5995-00-134-7159	CX7453AU	80058	CABLE ASSEMBLY, POWER, ELECTRICAL.....	EA	1
3	6	PAFZZ	5935-00-064-5731	U237RG	81349	CONNECTOR, PLUG. ELECTRICAL.....	EA	2
3	7	PAFZZ	8130-00-656-1090	RC435U	80058	REEL, CABLE.....	EA	1
3	8	PAFZZ	5995-00-935-2686	CX7705AU	80058	CABLE ASSEMBLY, POWER ELECTRICAL.....	EA	1

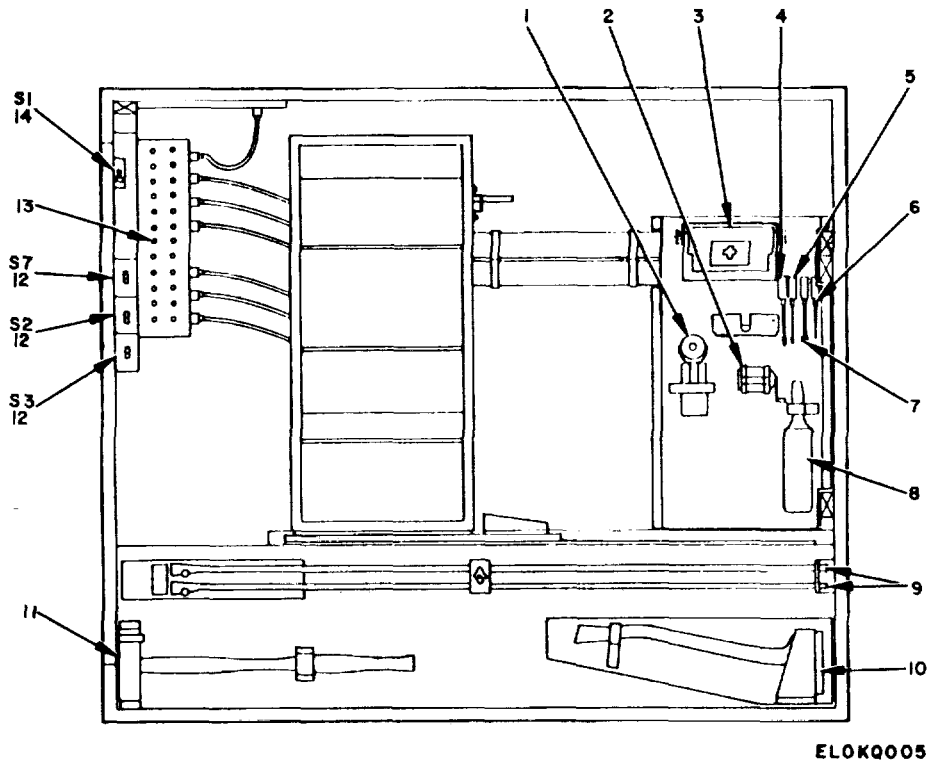
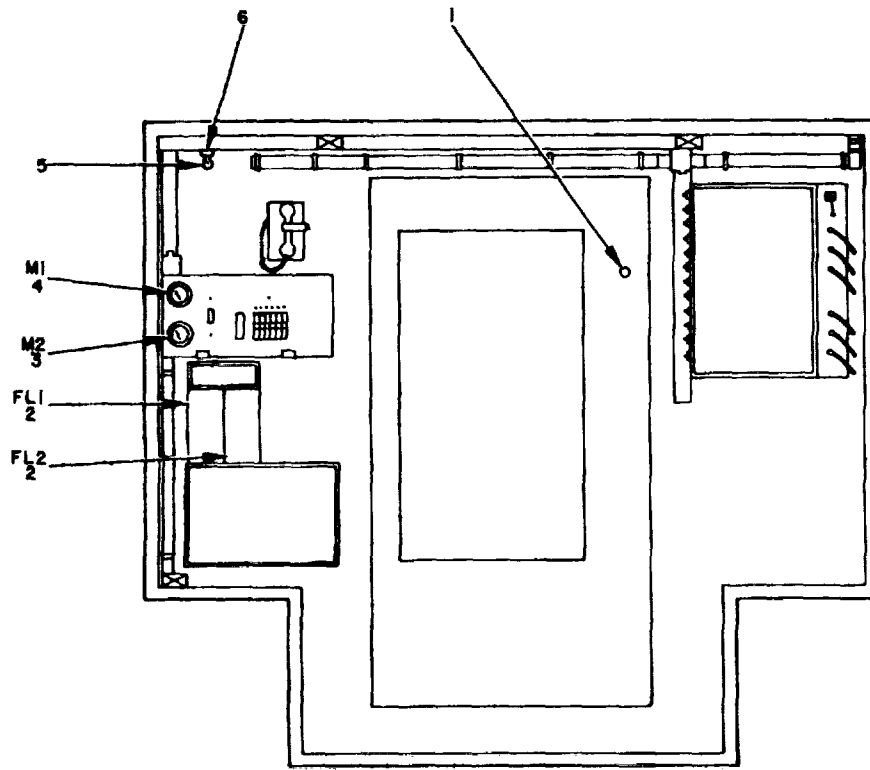


Figure 4. Shelter, Electrical Equipment S-412/TCC-72, Roadside Wall.

SECTION II

(1) ILLUSTRATION		(2)	(3)	(4)	(5)	(6)	(7)	(8)
(a) FIG NO.	(b) ITEM NO.	SMR CODE	NATIONAL STOCK NUMBER	PART NUMBER	FSCM	DESCRIPTION <i>USABLE ON CODE</i>	U/M	QTY INC IN UNIT
4	1	PAOZZ	6230-00-729-9614	2106-7	32572	LANTERN, ELECTRIC	EA	1
4	2	PAOZZ	7520-00-162-6178	SCC539503	80063	SHARPENER, PENCIL	EA	1
4	3	PADZZ	6545-00-922-1200	SCD539483	80063	KIT, FIRST AID, GENERAL PURPOSE	EA	1
4	4	PAOZZ	5120-00-234-8912	SCC539984-4	80063	SCREWDRIVER, CROSS TIP	EA	1
4	5	PAOZZ	5120-00-234-8910	SCC539502-4	80063	SCREWDRIVER, FLAT TIP	EA	1
4	6	PAOZZ	5120-00-234-8913	SCC539894-3	80063	SCREWDRIVER CROSS TIP	EA	1
4	7	PAOZZ	5120-00-224-2506	SCC681041	80063	WRENCH, SOCKET, SPIN TYPE	EA	1
4	8	PAFZZ	5805-00-342-4521	SCC539469	80063	BRUSH, DUSTING, BENCH	EA	1
4	9	PAOZZ	5975-00-224-5260	MX148G	81349	ROD, GROUND	EA	1
4	10	PAOZZ	5110-00-115-5049	SCC539451	80063	AXE, SINGLE BIT	EA	1
4	11	PAOZZ	5120-00-900-6096	SCC539505	80063	HAMMER, HAND	EA	1
4	12	PAOZZ	5930-00-827-0034	1201	74545	SWITCH, TOGGLE	EA	3
4	13	PAOZZ	5930-00-087-4712	8906K1384	27181	SWITCH, TOGGLE	EA	24
4	14	PAOZZ	5930-00-636-3160	BZ2PR822A2	91929	SWITCH, SENSITIVE	EA	1



ELOK006

Figure 5. Shelter, Electrical Equipment S-412/TCC-72, Rear Wall.

SECTION II

(1) ILLUSTRATION		(2)	(3)	(4)	(5)	(6)	(7)	(8)
(a) FIG NO.	(b) ITEM NO.	SMR CODE	NATIONAL STOCK NUMBER	PART NUMBER	FSCM	DESCRIPTION <i>USABLE ON CODE</i>	U/M	QTY INC IN UNIT
5	1	PAOZZ	5340-00-930-1476	CR101	23404	WINDOW, DOOR, ONEWAY	EA	1
5	2	PAOZZ	5915-00-909-7762	SP289	81831	FILTER, BAND PASS.....	EA	2
5	3	PAFZZ	6625-00-341-4071	MR36W150A CVVR	81349	VOLTMETER.....	EA	1
5	4	PAFZZ	6625-00-854-6787	MR36W100A CAAR	81349	AMMETER.....	EA	1
5	5	PAOZZ	6240-00-635-9753	NE-34	08806	LAMP, GLOW	EA	1
5	6	PAFZZ	6250-00-299-6562	4109	74545	LAMPHOLDER	EA	1

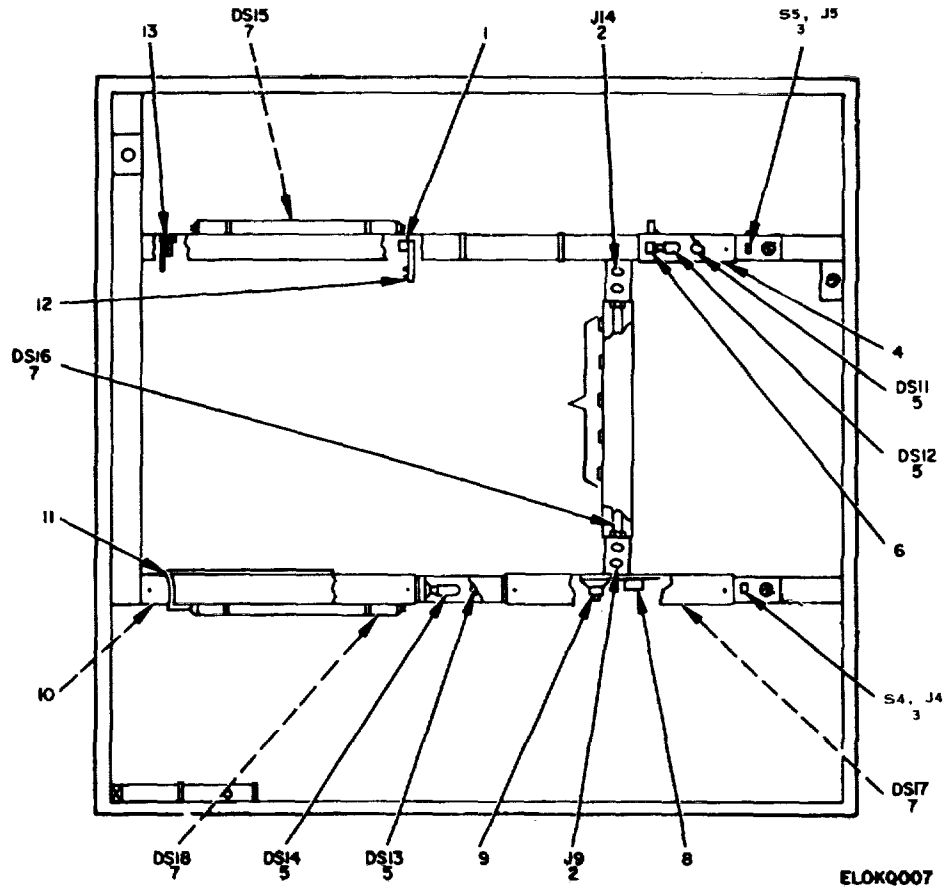
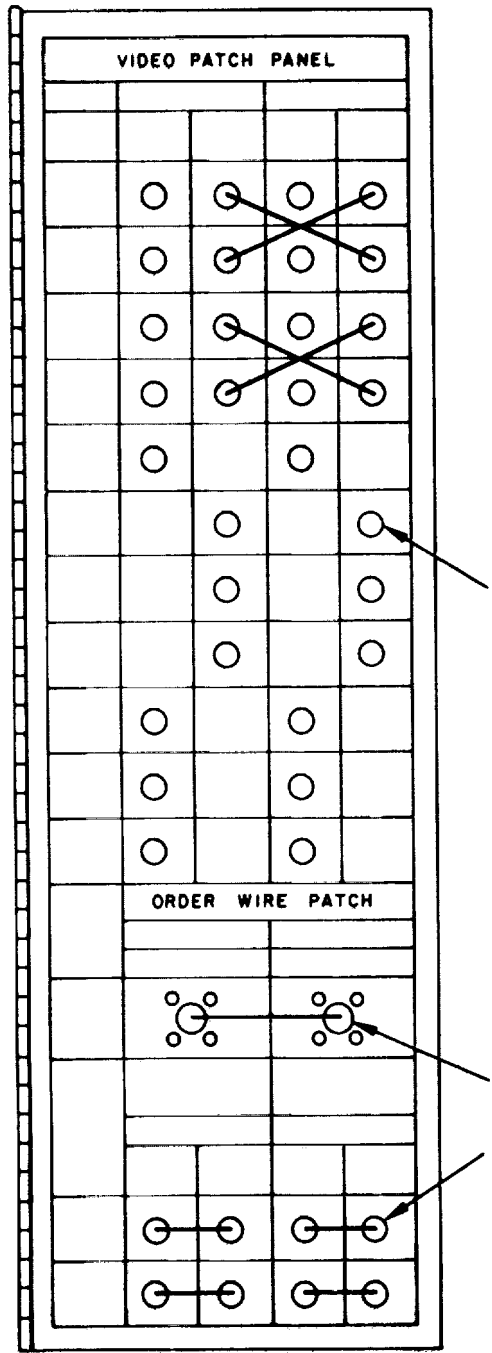


Figure 6. Shelter, Electrical Equipment S-412/TCC-72, Ceiling Plan.

SECTION II

(1)		(2)	(3)	(4)	(5)	(6)	(7)	(8)
ILLUSTRATION		SMR CODE	NATIONAL STOCK NUMBER	PART NUMBER	FSCM	DESCRIPTION <i>USABLE ON CODE</i>	U/M	QTY INC IN UNIT
(a) FIG NO.	(b) ITEM NO.							
6	1	PAOZZ	6250-00-175-2559	78X491	85599	LAMPHOLDER	EA	4
6	2	PAFZZ	5935-00-283-4003	5262	74545	CONNECTOR,RECEPTACL ELECTRICAL.....	EA	2
6	3	PAFZZ	5935-00-999-6934	5225	74545	SWITCH AND RECEPTACLE ASSEMBLY.....	EA	2
6	4	PAFZZ	6210-00-930-1217	SCC539466-2	80063	SHIELD, INCANDESCENT LIGHT	EA	2
6	5	PAOZZ	6240-00-155-8655	25TRDC	08805	LAMP INCANDESCENT	EA	4
6	6	PAFZZ	6250-00-995-9074	12-240	72619	LAMPHOLDER	EA	4
6	7	PAOZZ	6240-00-152-2996	SCC539495	80063	LAMP FLUORESCENT	EA	4
6	8	PAFZZ	5915-00-116-8916	5918	02777	FILTER. RADIO INTERFERENCE	EA	4
6	9	PAOZZ	6250-00-804-3449	89G457D	24457	BALLAST, LAMP	EA	4
6	10	PAOZZ	6250-00-194-4794	SCB539504	80063	STARTER, LAMP FLUORESCENT.....	EA	4
6	11	PAOZZ	6210-00-451-8350	SCC539466-1	80063	SHIELD, FLUORESCENT LIGHT	EA	4
6	12	PAOZZ	6210-00-757-9694	P40	19634	LOCK, LAMP, FLUORESCENT	EA	8
6	13	PAOZZ	6250-00-227-0317	78X736	85599	LAMPHOLDER	EA	4

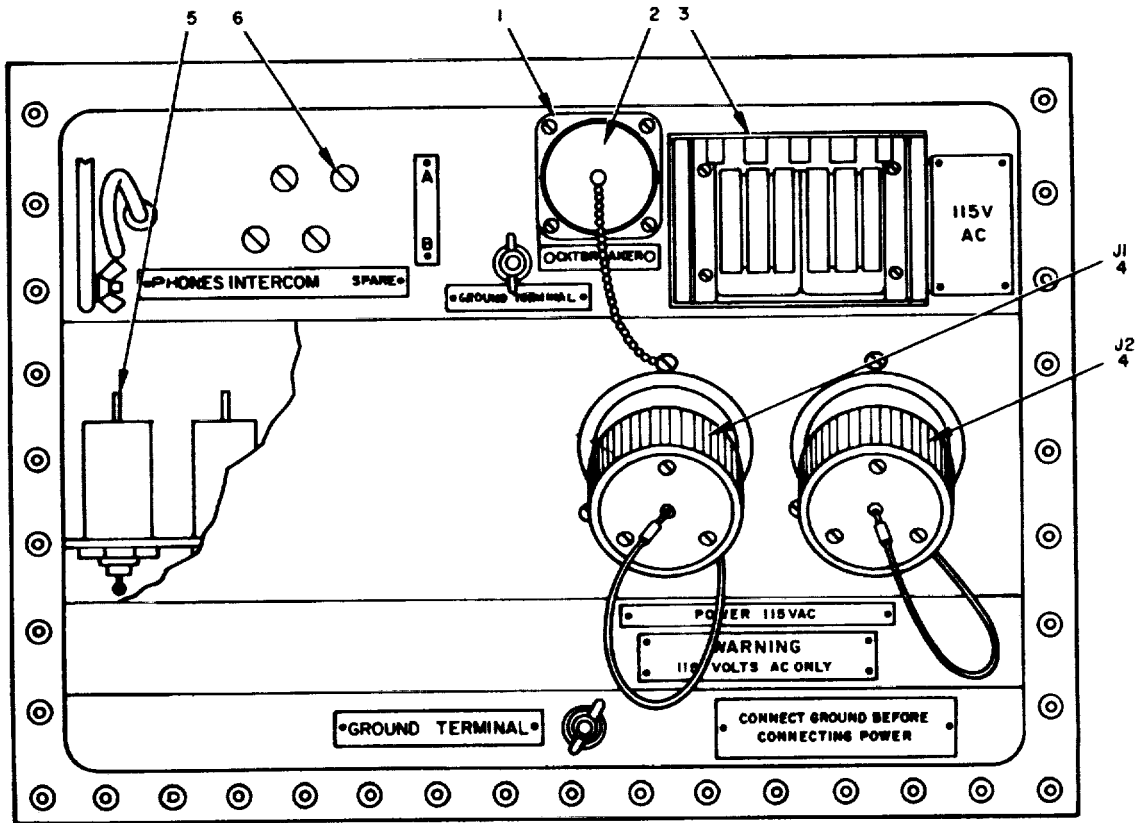


ELOK0008

Figure 7. Shelter, Electrical Equipment S-412/TCC-72, Video Patch Panel.

SECTION II

(1) ILLUSTRATION		(2)	(3)	(4)	(5)	(6)	(7)	(8)
(a) FIG NO.	(b) ITEM NO.	SMR CODE	NATIONAL STOCK NUMBER	PART NUMBER	FSCM	DESCRIPTION <i>USABLE ON CODE</i>	U/M	QTY INC IN UNIT
7	1	PAFZZ	5915-00-259-3347	UG414AU	81349	CONNECTOR, RECEPTACLE, ELECTRICAL	EA	30
7	2	PAFZZ	5935-00-715-4698	PTB12-8PS	77820	CONNECTOR, RECEPTACLE ELECTRICAL	EA	2
7	3	PAFZZ	5935-00-477-1273	16532	91737	CONNECTOR, RECEPTACLE. ELECTRICAL	EA	8



ELOK009

Figure 8. Shelter, Electrical Equipment S-412/TCC-72, Power Entrance Box.

SECTION II

(1)		(2)	(3)	(4)	(5)	(6)	(7)	(8)
ILLUSTRATION		SMR CODE	NATIONAL STOCK NUMBER	PART NUMBER	FSCM	DESCRIPTION <i>USABLE ON CODE</i>	U/M	QTY INC IN UNIT
(a) FIG NO.	(b) ITEM NO.							
8	1	PAOZZ	5935-00-135-6163	10-37093-323	77820	SHELL, ELECTRICAL CONNECTOR	EA	1
8	2	PAFZZ	5935-00-959-5668	10-101960-103	77820	COVER, ELECTRICAL CONNECTOR.....	EA	1
8	3	PAOZZ	5975-00-947-3068	M3780FS	21873	COVER, ELECTRICAL.....	EA	1
8	4	PAFZZ	5935-00-064-5732	U238BU	81349	CONNECTOR, RECEPTACLE, ELECTRICAL	EA	2
8	5	PAFZZ	5915-00-946-5369	JW17-1122	56289	FILTER, RADIO INTERFERENCE	EA	4
8	6	PAOZZ	5940-00-281-5386	U106U	81340	POST, BINDING	EA	108

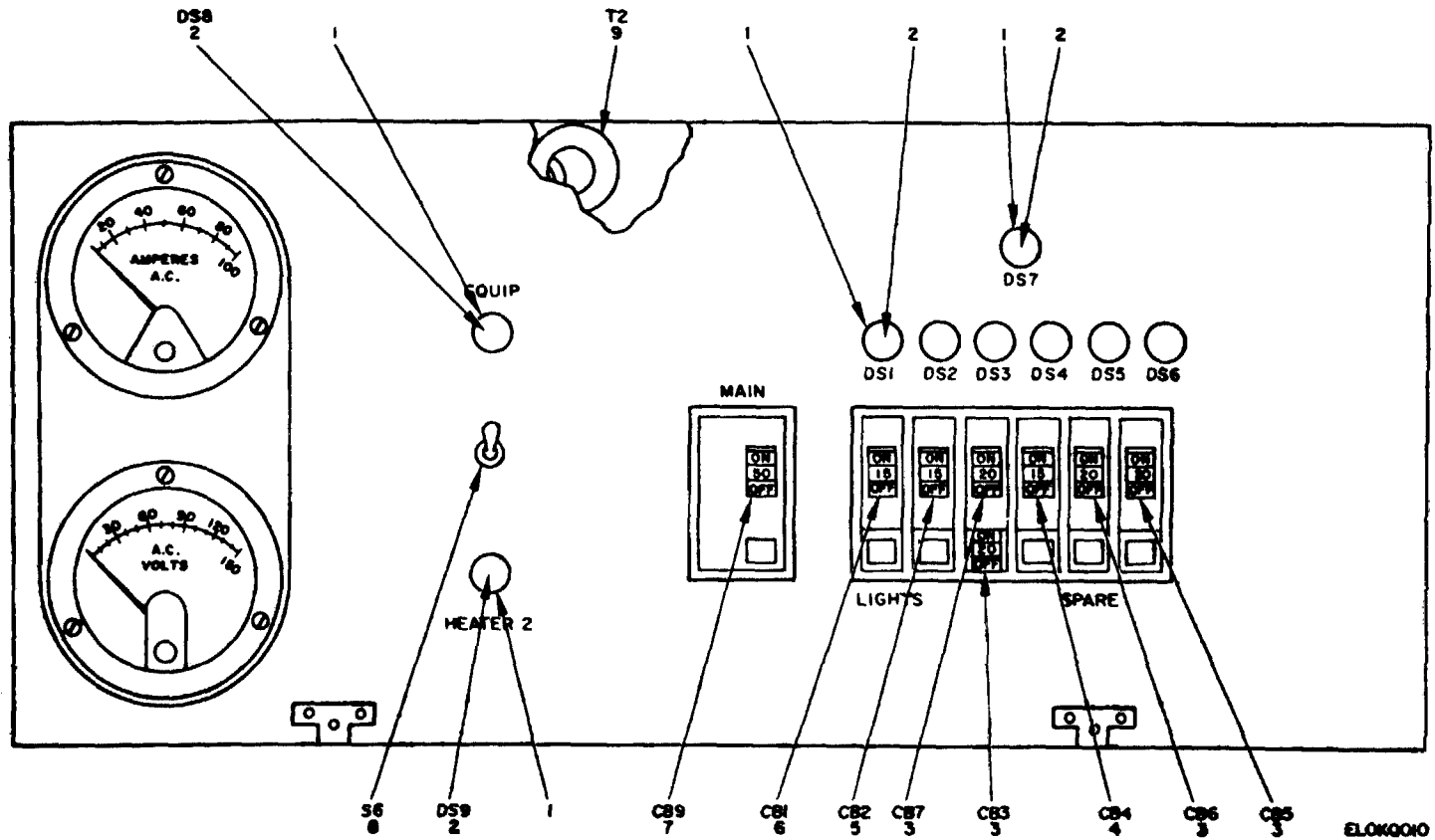
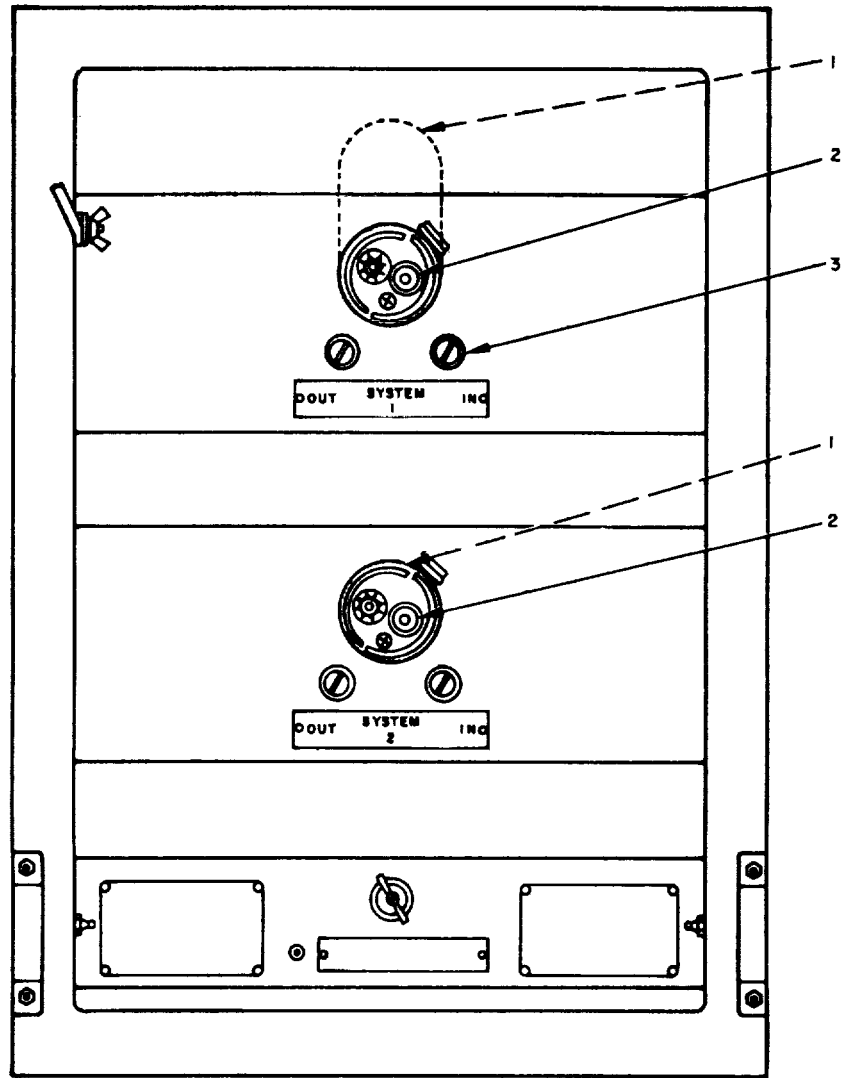


Figure 9. Shelter, Electrical Equipment S-412/TCC-72, Power Distribution Box.

SECTION II

(1) ILLUSTRATION		(2)	(3)	(4)	(5)	(6)	(7)	(8)
(a) FIG NO.	(b) ITEM NO.	SMR CODE	NATIONAL STOCK NUMBER	PART NUMBER	FSCM	DESCRIPTION <i>USABLE ON CODE</i>	U/M	QTY INC IN UNIT
9	1	PAOZZ	6210-00-087-4248	31-0408-0331-245	72619	LAMPHOLDER	EA	9
9	2	PAFZZ	6240-00-223-9100	NE51	08806	LAMP GLOW	EA	9
9	3	PAFZZ	5925-00-818-4811	00-115	56365	CIRCUIT BREAKER	EA	4
9	4	PAFZZ	5925-00-583-7941	00-120	56365	CIRCUIT BREAKER	EA	1
9	5	PAFZZ	5925-00-815-6657	00-1515	56365	CIRCUIT BREAKER	EA	1
9	6	PAFZZ	5925-00-681-4952	MS25244-10	96906	CIRCUIT BREAKER	EA	1
9	7	PAFZZ	5925-00-703-6084	00-250	56365	CIRCUIT BREAKER	EA	1
9	8	PAFZZ	5930-00-543-8394	MS525103-23	96906	SWITCH, TOGGLE	EA	1
9	9	PAOZZ	5950-00-492-8208	3CT118	93993	TRANSFORMER, CURRENT	EA	1



ELOKQ011

Figure 10. Shelter, Electrical Equipment S-412/TCC-72, Video Entrance Box.

SECTION II

(1) ILLUSTRATION		(2)	(3)	(4)	(5)	(6)	(7)	(8)
(a) FIG NO.	(b) ITEM NO.	SMR CODE	NATIONAL STOCK NUMBER	PART NUMBER	FSCM	DESCRIPTION <i>USABLE ON CODE</i>	U/M	QTY INC IN UNIT
10	1	PAFZZ	5935-00-045-9832	U187AG	81349	CONNECTOR, RECEPTACLE, ELECTRICAL	EA	2
10	2	PAFZZ	5935-00-449-7747	UG1837U	81349	CONNECTOR, RECEPTACLE, ELECTRICAL	EA	2
10	3	PAFZZ	5920-00-930-2307	SCB547223	80063	ARRESTOR, LIGHTNING	EA	4

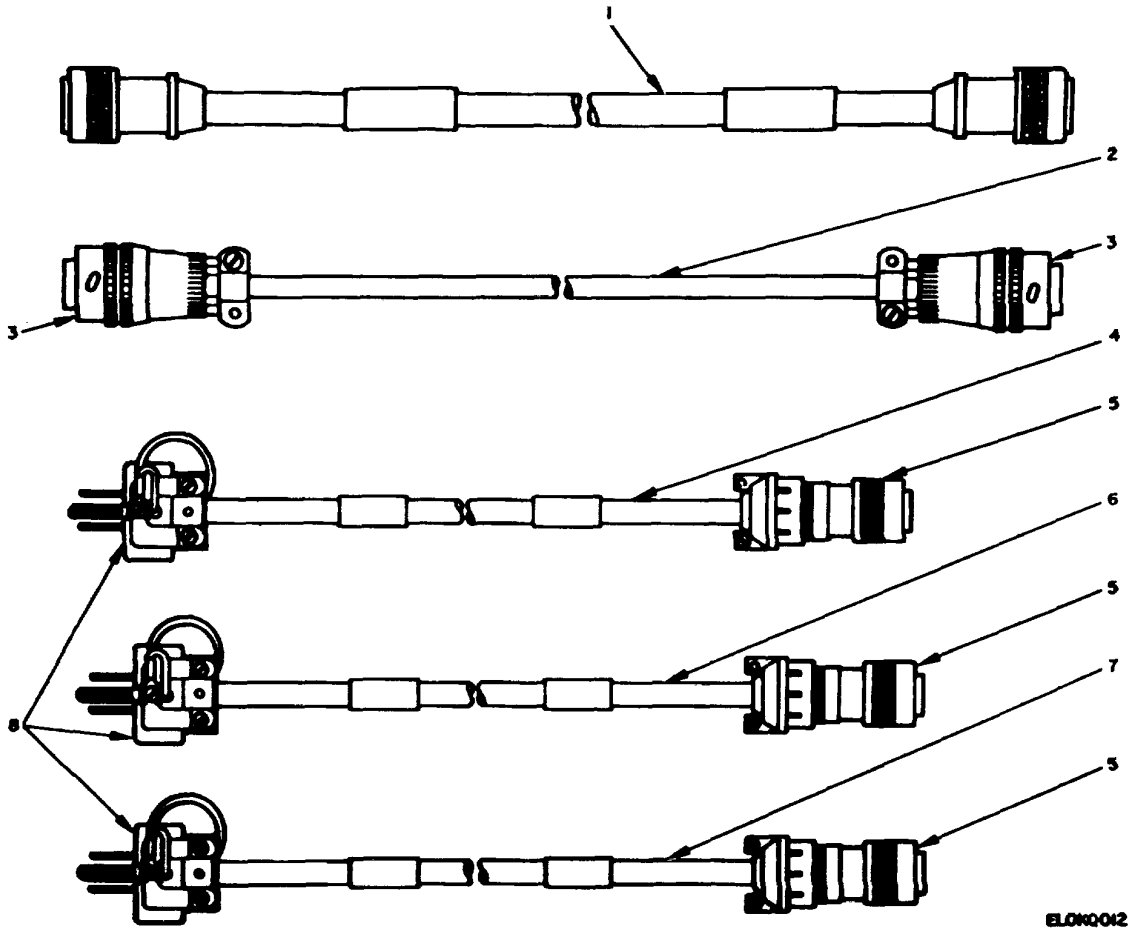
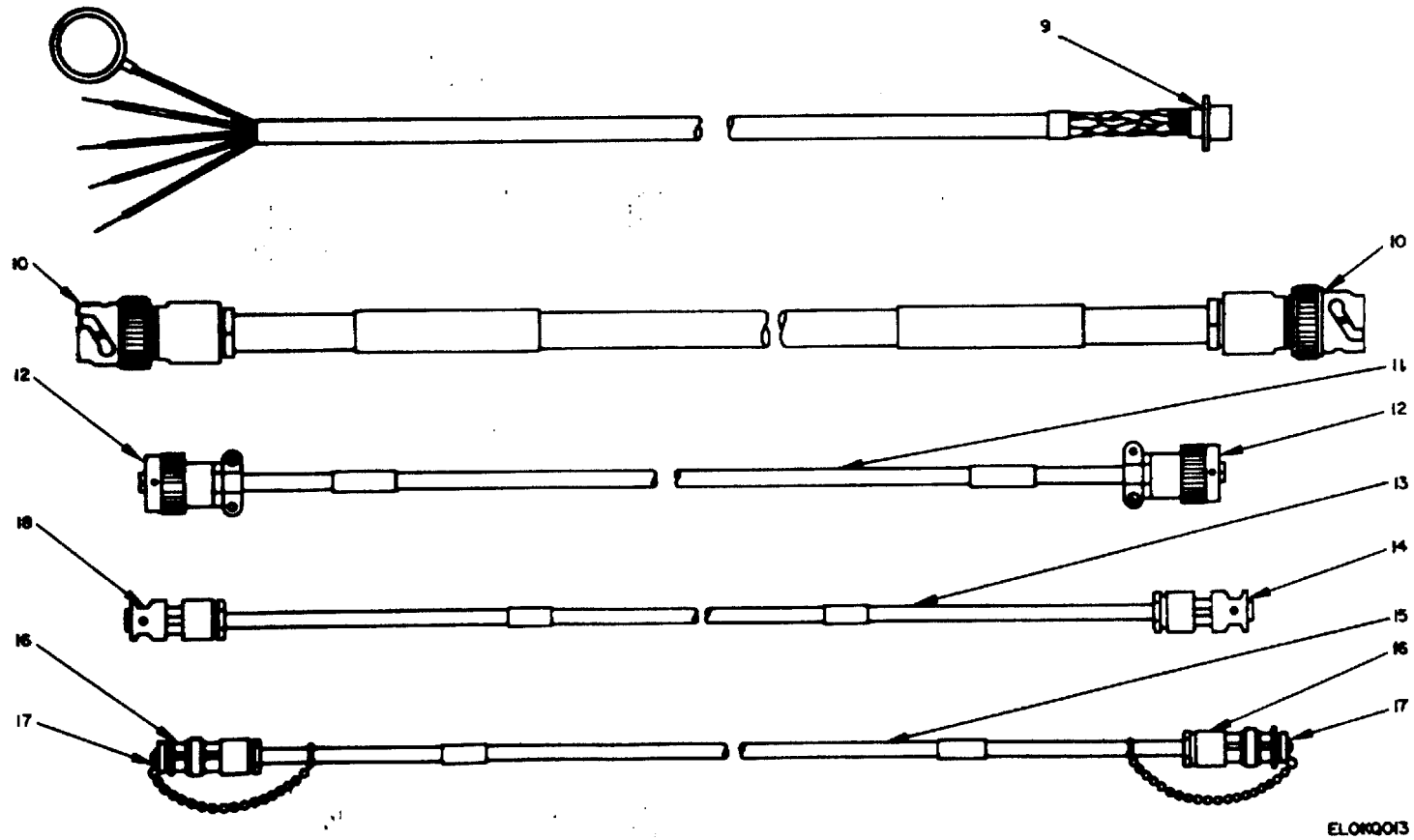


Figure 11. Shelter, Electrical Equipment S-412/TCC-72, Cable Assemblies (Sheet 1 of 2).

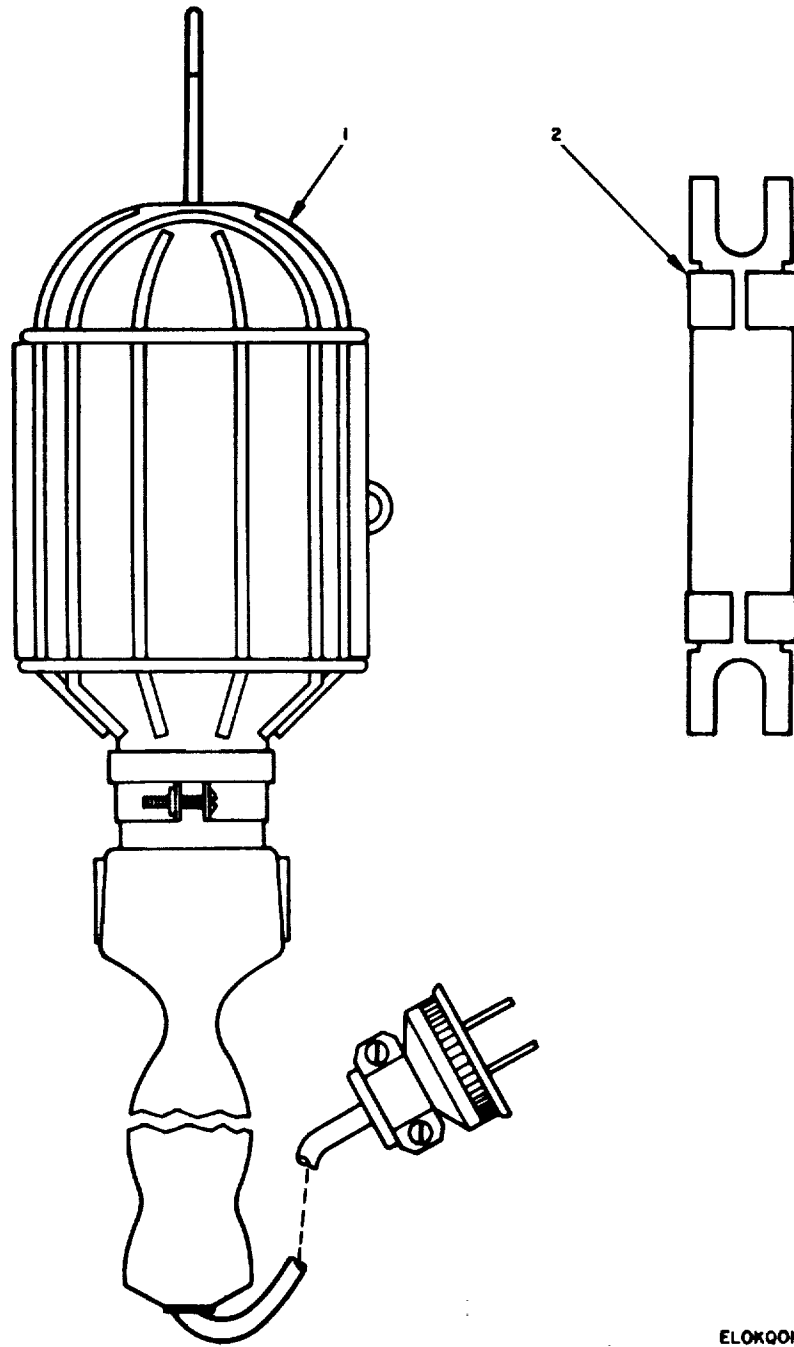


ELORQ013

Figure 11. Shelter, Electrical Equipment S-412/TCC-72, Cable Assemblies (Sheet 2 of 2).

SECTION II

(1) ILLUSTRATION		(2)	(3)	(4)	(5)	(6)	(7)	(8)
(a) FIG NO.	(b) ITEM NO.	SMR CODE	NATIONAL STOCK NUMBER	PART NUMBER	FSCM	DESCRIPTION USABLE ON CODE	U/M	QTY INC IN UNIT
11	1	PAFZZ	5995-00-351-3107	SCD681007	80063	CABLE ASSEMBLY, SPECIAL PURPOSE, ELECTRICAL...	EA	6
11	2	PAFZZ	5995-00-736-0943	SCC343394GP1	80063	CABLE ASSEMBLY, TELEPHONE.....	EA	1
11	3	PAFZZ	5935-00-992-0304	PT0610E10-98PSB	77820	CONNECTOR, PLUG, ELECTRICAL	EA	2
11	4	PAFZZ	5995-00-177-4555	SCD681112GP1	80063	CABLE ASSEMBLY, PLUG, ELECTRICAL	EA	2
11	5	PAFZZ	5935-00-931-7490	UP221M	81349	CONNECTOR, PLUG, ELECTRICAL	EA	1
11	6	PAFZZ	5995-00-177-4554	SCD681112GP4	80063	CABLE ASSEMBLY, POWER, ELECTRICAL	EA	2
11	7	PAFZZ	5995-00-177-4556	SCD681112GP3	80063	CABLE ASSEMBLY, POWER. ELECTRICAL.....	EA	2
11	8	PAFZZ	5935-00-484-5033	BTG6812-3S	09922	CONNECTOR, PLUG, ELECTRICAL	EA	6
11	9	PAFZZ	5935-00-992-0311	PT02E10-98S	77820	CONNECTOR, RECEPTACLE, ELECTRICAL	EA	4
11	10	PAFZZ	5935-00-105-4641	PL75	14943	CONNECTOR. PLUG, ELECTRICAL	EA	4
11	11	PAFZZ	5995-00-192-9613	SCD627392GP1	80063	CABLE ASSEMBLY. POWER. FLECTRICAL	EA	1
11	12	PAFZZ	5935-00-817-3373	PT06E12-8PSB	77E20	CONNECTOR, PLUG. ELECTRICAL	EA	2
11	13	PAFZZ	5995-00-192-9603	SCD6270R1GP7	80063	CABLE ASSEMBLY, RADIO FREQUENCY	EA	5
11	14	PAFZZ	5935-00-930-1210	13738	91737	CONNFCUTOR. PLUG, ELECTRICAL	EA	5
11	15	PAFZZ	5995-00-192-9607	SCD595511GP12	80063	CABLE ASSEMBLY, RADIO FREQUENCY	EA	26
11	16	PAFZZ	5935-00-762-0728	UG260DL	81349	CONNECTOR. PLUG, ELECTRICAL	EA	94
11	17	PAFZZ	5935-00-133-8713	CW282U	80058	COVER. ELECTRICAL CONNECTOR	EA	26
11	18	PAFZZ	5935-00-949-5244	13739	91737	CONNECTOR, PLUG. ELECTRICAL	EA	10



ELOK0014

Figure 12. Shelter, Electrical Equipment S-412/TCC-72, Extension Light.

SECTION II

(1)		(2)	(3)	(4)	(5)	(6)	(7)	(8)
ILLUSTRATION		SMR CODE	NATIONAL STOCK NUMBER	PART NUMBER	FSCM	DESCRIPTION <i>USABLE ON CODE</i>	U/M	QTY INC IN UNIT
(a) FIG NO.	(b) ITEM NO.							
12	1	PAFZZ	6230-00-115-2687	SCC539496	80063	LIGHT, EXTENSION	EA	1
12	2	PAFZZ	6150-00-495-1214	SCB539492	80063	LEAD,ELECTRICAL	EA	1

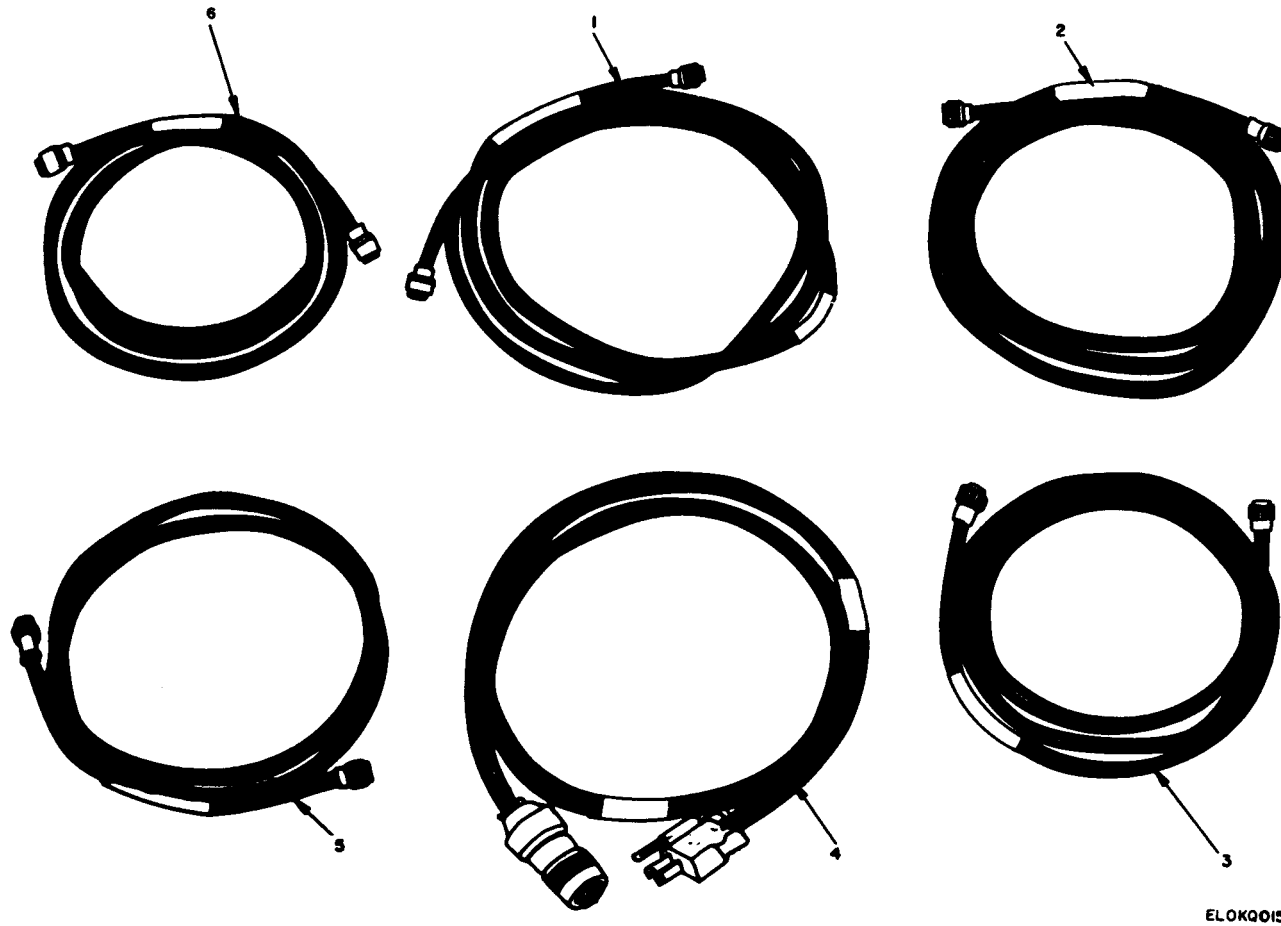
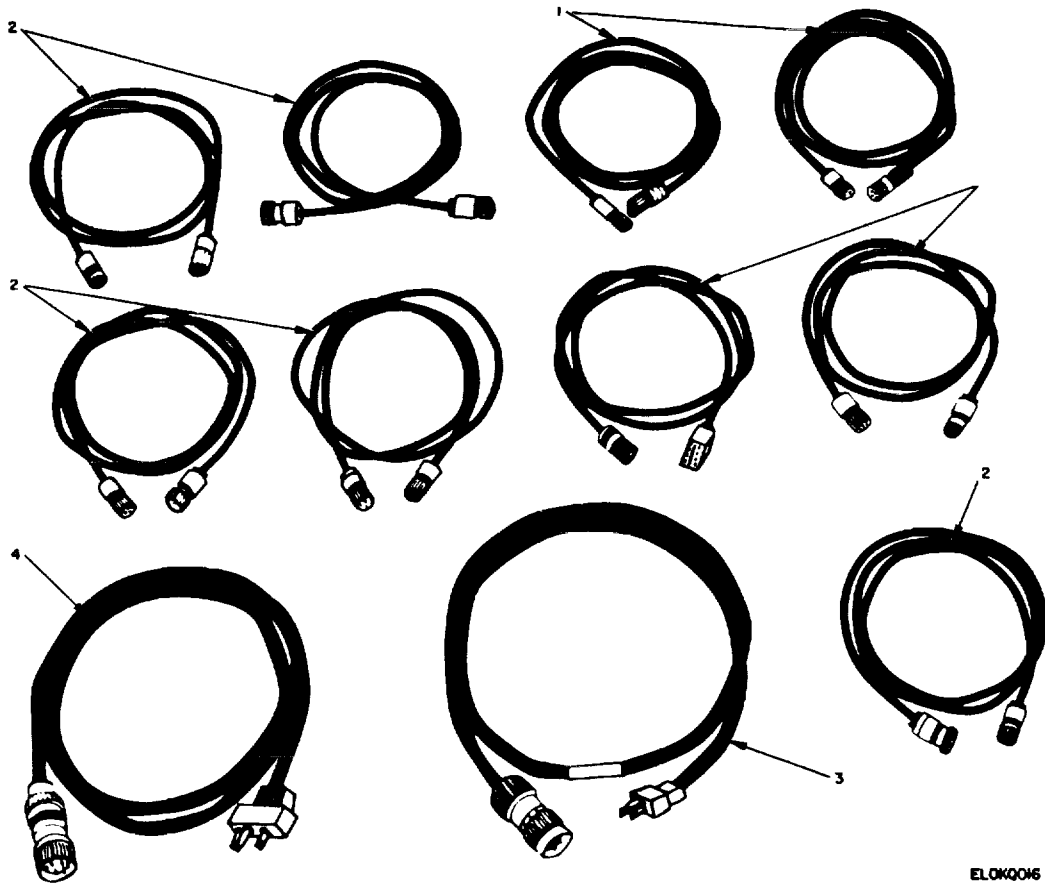


Figure 13. Installation Kit, TSEC/KG-27.

SECTION II

(1) ILLUSTRATION		(2)	(3)	(4)	(5)	(6)	(7)	(8)
(a) FIG NO.	(b) ITEM NO.	SMR CODE	NATIONAL STOCK NUMBER	PART NUMBER	FSCM	DESCRIPTION <i>USABLE ON CODE</i>	U/M	QTY INC IN UNIT
						GROUP 0401 INSTALLATION KIT. TSEC/KG-27		
13	1	PADZZ	5995-00-181-9545	SCD693658GR9	80063	CABLE ASSEMBLY. RADIO FREQUENCY.....	EA	1
13	2	PADZZ	5995-00-181-9546	SCD693658GR10	80063	CABLE ASSEMBLY. RADIO FREQUENCY.....	EA	1
13	3	PADZZ	5995-00-192-9608	SCD595511GR87	80063	CABLE ASSEMBLY, RADIO FREQUENCY.....	EA	1
13	4	PADZZ	5995-00-177-4555	SCD681112GR2	80063	CABLE ASSEMBLY, SHIELDED POWER.....	EA	1
13	5	PADZZ	5995-00-001-1465	SCD595511GR88	80063	CABLE ASSEMBLY, RADIO FREQUENCY.....	EA	1
13	6	PADZZ	5995-00-192-9605	SCD595511GR86	80063	CABLE ASSEMBLY, RADIO FREQUENCY.....	EA	1



ELOKQ016

Figure 14. Loop-Back Kit, TSEC/KG-27.

SECTION II

REPAIR PARTS LIST

(1) ILLUSTRATION		(2)	(3)	(4)	(5)	(6)	(7)	(8)
(a) FIG NO.	(b) ITEM NO.	SMR CODE	NATIONAL STOCK NUMBER	PART NUMBER	FSCM	DESCRIPTION <i>USABLE ON CODE</i>	U/M	QTY INC IN UNIT
						GROUP 0402 LOOP-RACK KIT, TSEC/KG-27		
14	1	PADZZ	5995-00-177-4615	CG3473U	80058	CABLE ASSEMBLY, RADIO FREQUENCY	EA	4
14	2	PADZZ	5995-00-177-4667	CC3419U	80058	CABLE ASSEMBLY, VIDEO	EA	5
14	3	PADZZ	5995-00-177-4665	CX10764G	80058	CABLE, SHIELDED POWER	EA	1
14	4	PADZZ	5995-00-935-5294	CX17727G	80058	CABLE ASSEMBLY POWER.....	EA	1

SECTION IV. NATIONAL STOCK NUMBER AND PART NUMBER INDEX

NOTE: LATEST NATIONAL STOCK NUMBER ASSIGNMENTS ARE INCLUDED AT END OF INDEX.

<u>STOCK NUMBER</u>	<u>FIGURE NO.</u>	<u>ITEM NO.</u>	<u>STOCK NUMBER</u>	<u>FIGURE NO.</u>	<u>ITEM NO.</u>
5935-00-045-9832	10	1	6210-00-451-8350	6	11
5935-00-064-5731	3	6	5935-00-477-1273	7	3
5935-00-064-5732	8	4	5935-00-484-5033	11	8
5805-00-069-8795	1	4	6150-00-495-1214	12	2
6210-00-087-4248	9	1	5805-00-543-0012	1	6
5930-00-087-4712	4	13	5930-00-543-8394	9	8
5935-00-105-4641	11	10	5925-00-583-7941	9	4
6230-00-115-2687	12	1	5340-00-592-7996	2	7
5110-00-115-5049	4	10	6240-00-635-9753	5	5
5915-00-116-8916	6	8	8130-00-656-1090	3	7
5935-00-133-8713	11	17	5925-00-681-4952	9	6
5995-00-134-7159	3	5	5925-00-703-6084	9	7
5935-00-135-6163	8	1	5975-00-705-5841	2	11
5910-00-142-4515	3	1	5935-00-715-4698	7	2
6240-00-152-2996	6	7	6230-00-729-9614	4	1
6240-00-155-8655	6	5	5995-00-736-0943	11	2
7520-00-159-4863	3	4	5830-00-752-5357	1	2
7520-00-162-6178	4	2	7210-00-753-3043	2	5
6250-00-175-2559	6	1	6210-00-757-9694	6	12
5995-00-177-4554	11	6	5935-00-762-0728	11	16
5995-00-177-4555	11	4	6250-00-804-3449	6	9
5995-00-177-4555	13	4	5410-00-809-6697	1	3
5995-00-177-4556	11	7	5935-00-813-4720	2	9
5995-00-177-4665	14	3	5925-00-815-6657	9	5
5995-00-177-4667	14	2	5935-00-817-3373	11	12
5995-00-177-4675	14	1	5935-00-817-3385	2	10
5995-00-181-9545	13	1	5925-00-818-4811	9	3
5995-00-181-9546	13	2	5930-00-827-0034	4	12
5995-00-192-9603	11	13	6625-00-854-6787	5	4
5995-00-192-9607	11	15	5340-00-857-1424	2	8
5995-00-192-9613	11	11	5950-00-892-8208	9	9
6250-00-194-4794	6	10	5120-00-900-6096	4	11
6240-00-223-9100	9	2	5805-00-900-8200	1	1
5120-00-224-2596	4	7	5915-00-909-7762	5	2
5975-00-224-5260	4	9	6545-00-922-1200	4	3
6250-00-227-0317	6	13	5820-00-928-3382	1	5
5935-00-233-3225	2	6	5935-00-930-1210	11	14
6105-00-234-3504	3	3	6210-00-930-1217	6	4
5120-00-234-8910	4	5	5340-00-930-1476	5	1
5120-00-234-8912	4	4	5920-00-930-2307	10	3
5120-00-234-8913	4	6	5820-00-930-8078	1	1
5935-00-259-3347	7	1	5820-00-930-8079	1	5
7105-00-269-8463	2	2	5935-00-931-7490	11	5
4210-00-270-4512	2	3	5995-00-935-2686	3	8
5940-00-283-5386	8	6	5995-00-935-5294	14	4
4210-00-288-6849	2	4	5915-00-946-5369	8	5
6250-00-299-6562	5	6	5975-00-947-3068	8	3
5805-00-342-4521	4	8	5935-00-949-5244	11	18
5935-00-350-1834	3	2	5935-00-992-0304	11	3
5995-00-351-3107	11	1	5935-00-992-0311	11	9
6645-00-410-2395	2	1	6250-00-995-9074	6	6
5935-00-449-7747	10	2	5935-00-999-6934	6	3

<u>PART NUMBER</u>	<u>FIG. NO.</u>	<u>ITEM NO.</u>	<u>PART NUMBER</u>	<u>FIG. NO.</u>	<u>ITEM NO.</u>		
BTG6B12-3S	09922	11	8	N1	06229	2	8
BZ2RW822A2	91929	4	14	N3	06229	2	11
C8101	23404	5	1	N7	06229	2	7
CG3419U	80058	14	2	PL75	14949	11	10
CG3473U	80058	14	1	PT812-8PS	77820	7	2
CV1548G	80058	1	4	PT02E10-98S	77820	11	9
CW282U	80058	11	17	PT06E10-98PSR	77820	11	3
CX10764G	80058	14	3	PT06E12-8PSR	77820	11	12
CX17727G	80058	14	4	PT06E12-8SSR	77820	2	10
CX7453AU	80058	3	5	P40	19634	6	12
CX7705AU	80058	3	8	Q0-115	56365	9	3
JW17-1122	56289	8	5	Q0-120	56365	9	4
LS147CFI	80058	1	2	Q0-1515	56365	9	5
MR36W100ACAAR	81349	5	4	Q0-250	56365	9	7
MR36W150ACVVR	81349	5	3	R81	33525	2	4
MS25103-23	96906	9	8	RC435U	80058	3	7
MS25244-10	96906	9	6	SCB539492	80063	12	2
MS3114E14-19P	96906	2	9	SCB539504	80063	6	10
MS3116J14-19S	96906	2	6	SCB547223	80063	10	3
MX148G	81349	4	9	SCC343394GP1	80063	11	2
M3780FS	21873	8	3	SCC539451	80063	4	10
NE-34	08806	5	5	SCC539466-1	80063	6	11
NE51	08806	9	2	SCC539466-2	80063	6	4

SECTION IV. NATIONAL STOCK NUMBER AND PART NUMBER INDEX

PART NUMBER	FSCM	FIG. NO.	ITEM NO.	PART NUMBER	FSCM	FIG. NO.	ITEM NO.
SCC539469	80063	4	8	TD204U	80058	1	1
SCC539475	80063	2	1	TD660AG	80058	1	5
SCC539495	80063	6	7	TD660G	80058	1	5
SCC539496	80063	12	1	TD754G	80058	1	1
SCC539502-4	80063	4	5	TSECKG27	80058	1	7
SCC539503	80063	4	2	UG1837U	81349	10	2
SCC539505	80063	4	11	UG260DJ	81349	11	16
SCC539526	80063	2	5	UG414AU	81349	7	1
SCC539894-3	80063	4	6	UP221M	81349	11	5
SCC539894-4	80063	4	4	U106U	81349	8	6
SCC681041	80063	4	7	U187AG	81349	10	1
SCD539454	80063	3	4	U2378G	81349	3	6
SCD539471	80063	2	2	U238BU	81349	8	4
SCD539482	80063	2	3	10-101960-103	77820	8	2
SCD539483	80063	4	3	10-37093-323	77820	8	1
SCD539825	80063	3	3	12-240	72619	6	6
SCD595511GP12	80063	11	15	1201	74545	4	12
SCD595511GR86	80063	13	6	13738	91737	11	14
SCD595511GR87	80063	13	3	13739	91737	11	18
SCD595511GR88	80063	13	5	16532	91737	7	3
SCD627081GP7	80063	11	13	2106-7	32572	4	1
SCD627092GP1	80063	11	11	25T8DC	08805	6	5
SCD681007	80063	11	1	3CT11B	93993	9	9
SCD681112GP1	80063	11	4	37-0408-0331-245	72619	9	1
SCD681112GP3	80063	11	7	4109	74545	5	6
SCD681112GP4	80063	11	6	5225	74545	6	3
SCD681112GR2	80063	13	4	5261	74545	3	Z
SCD693658GR10	80063	13	2	5262	74545	6	Z
SCD693658GR9	80063	13	1	5918	02777	6	8
SP289	81831	5	2	78X491	85599	6	1
S32943	56289	3	1	78X736	85599	6	13
S412TCC72	80058	1	3	89G457D	24457	6	9
TA312PT	80058	1	6	8906K1384	27181	4	13

LATEST NATIONAL STOCK NUMBER ASSIGNMENTS

<u>STOCK NUMBER</u>	<u>FIGURE NO.</u>	<u>ITEM NO.</u>
5995-00-001-1465	13	5
5810-00-054-9110	1	7
5995-00-192-9605	13	6
5995-00-192-9608	13	3
5935-00-283-4003	6	2
6625-00-341-4071	5	3
5930-00-636-3160	4	14
5935-00-959-5668	8	2

By Order of the Secretary of the Army:

FRED C. WEYAND
General, United States Army
Chief of Staff

Official:

PAUL T. SMITH
Major General, United States Army
The Adjutant General

DISTRIBUTION:

Active Army:

USASA (2)	TOAD (14)
TSG (1)	SHAD (3)
COE (1)	Ft Richardson (ECOM Ofc) (2)
USAARENBD (1)	Svc Colleges (1)
DARCOM (1)	USASESS (5)
MICOM (2)	USAINTCS (3)
TECOM (2)	USAADS (2)
TRADOC (2)	USAFAS (2)
ARADCOM (2)	USAARMS (2)
ARADCOM Rgn (2)	USAIS (2)
OS Maj Comd (4)	USAES (2)
LOGCOMD (3)	MAAG (1)
USACC (4)	USARMIS (1)
MDW (1)	USAERDAA (1)
Armies (2)	USAERDAW (1)
Corps (2)	Sig FLDMS (1)
Instl (2) except	Units org under fol TOE:- 1 ea.
Ft Gillem (10)	11-85
Ft Gordon (10)	11-87
Ft Huachuca (10)	11-117
Ft Carson (5)	29-134
SAAD (30)	29-136
LBAD (14)	

ARNG & USAR: None.

For explanation of abbreviations used, see AR 310-50.

RECOMMENDED CHANGES TO EQUIPMENT TECHNICAL PUBLICATIONS



THEN...JOT DOWN THE
DOPE ABOUT IT ON THIS FORM.
CAREFULLY TEAR IT OUT, FOLD IT
AND DROP IT IN THE MAIL.

SOMETHING WRONG WITH PUBLICATION

FROM: (PRINT YOUR UNIT'S COMPLETE ADDRESS)

DATE SENT

PUBLICATION NUMBER

PUBLICATION DATE

PUBLICATION TITLE

BE EXACT PIN-POINT WHERE IT IS

PAGE NO.	PARA-GRAPH	FIGURE NO.	TABLE NO.

IN THIS SPACE, TELL WHAT IS WRONG
AND WHAT SHOULD BE DONE ABOUT IT.

TEAR ALONG PERFORATED LINE

PRINTED NAME, GRADE OR TITLE AND TELEPHONE NUMBER

SIGN HERE

